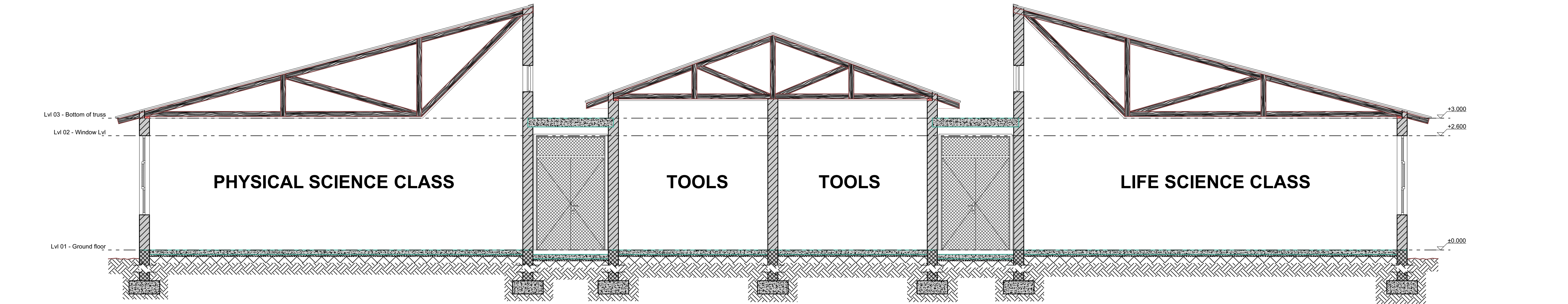
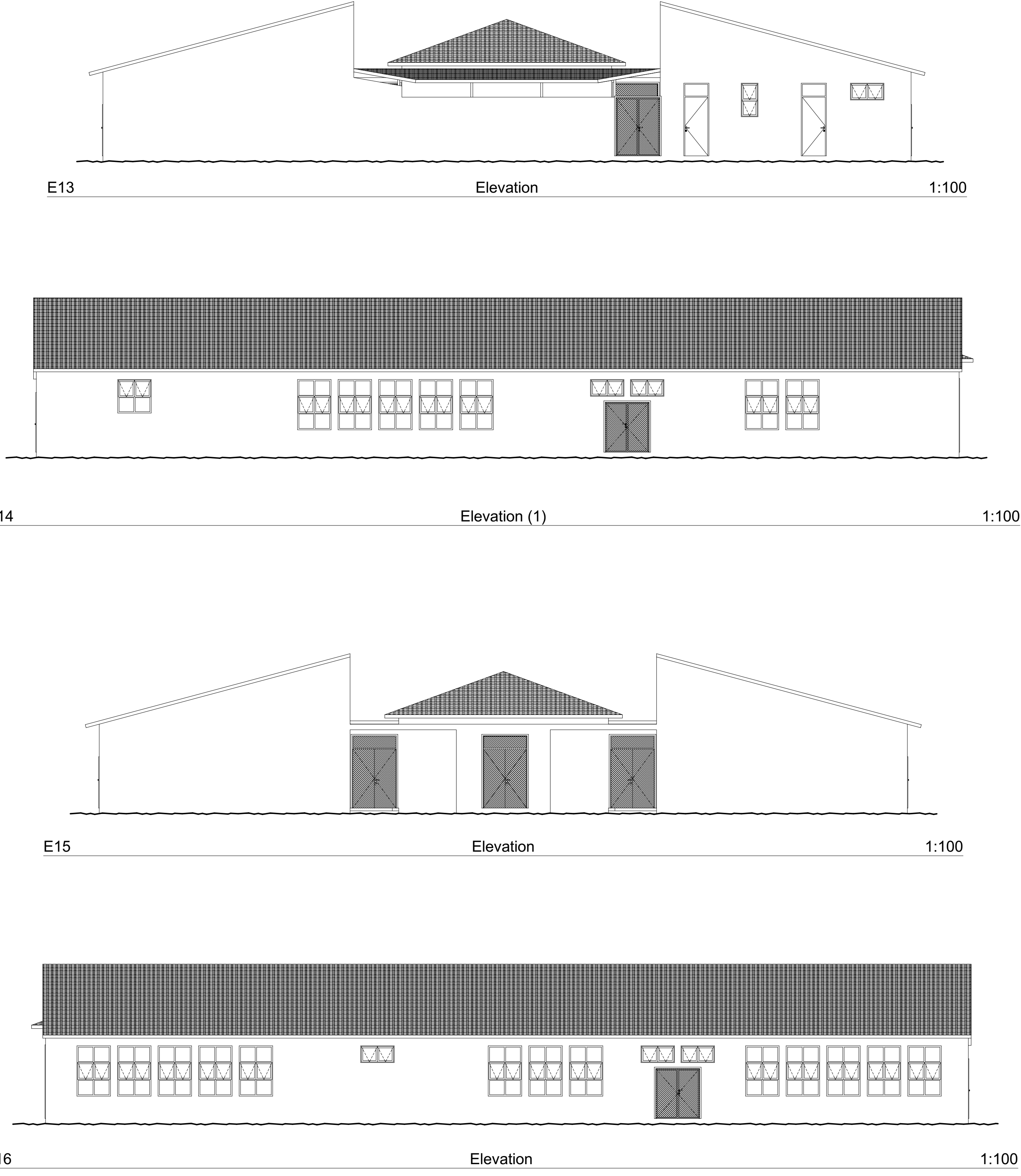


0. Ground Floor (3) 1:100



D Section D-D 1:50

NO.	DATE	REVISION	DRAWN
1	20/01/2023		
2			
3			
4			

- NOTES
- This drawing is copyright, reserved and remains the property of R&D Architecture Pty Ltd.
1. Prior to any demolition work, the architect, heritage consultant & contractor are to identify & mark buildings of heritage value.
  2. The contractor is to supply the architect & heritage consultant with a detailed proposal discussing how buildings will be cleaned, demolished and components stored for re-use. (where applicable)
  3. Once the contractor has completed the bulk earthworks, final platforms are to be surveyed and information forwarded to the architect & structural engineers for approval.
  4. All structural work is to Structural Engineers detail and specification.
  5. All internal road dimensions, road center lines, maneuvering spacing, turning circle and kerb radii are to Civil Engineers Detail. See Drawing Attached by ..... ENGINEERS.
  6. All bulk earthwork details, cut & fill values are to Civil Engineers Detail: See Drawing Attached by ..... CONSULTING ENGINEERS.
  7. All storm water attenuation measures and sewer reconfiguration is to Civil engineers Detail: See Drawing Attached by ..... CONSULTING ENGINEERS.
  8. All positioning of electrical metering units, mini substations, distribution kiosks & capacity requirements are to Electrical Engineers Detail: See Drawing Attached by ..... CONSULTING ENGINEERS.

CLIENT:

**DBSA**  
DEVELOPMENT BANK OF SOUTHERN AFRICA  
Building Africa's Prosperity

CONSULTANT:

**infrachamps consulting**  
(Pty) Ltd

PHYSICAL ADDRESS: Birchwood Court, 43 Montrose Street, Vorna Valley, Midrand, 1096.

CONTACT DETAILS: EMAIL: mondidi@infrachamps.com, FAX: +27 11 655 7011, TEL: +27 11 655 7000, CELL: +27 86 224 8885

EXTERNAL CONSULTANT:

**RSD Architecture**

PHYSICAL ADDRESS: 8 Pieter street, Centurion 0145.

CONTACTS: Tel: +27 87 405 5888, Fax: +27 11 655 7011, Email: info@rsdarchitects.com

NO.	DATE	REVISION	DRAWN
1	20/01/2023		
2			
3			
4			

DISCIPLINE	DRAWING NUMBER	STATUS	REVISION
ARCHITECTURE	RSD22/ICKZNA.05	CV	02